



Welcome to Year 6 – Cherry Class

Autumn 2023



Meet the staff

- Miss Jeal
- Mrs Hill/Mrs Cherry (Thursday)
- Mrs Maggs, Miss Gay, Mrs Miles





Our School Values

Striving to be the best we can be

At Wisborough Green Primary School, we are uncompromising in our aspirations for the children, staff and school community. We foster self-reliance, curiosity and independence so that our children become confident life-long learners. Our children feel happy, safe and valued. We take pride in our talented staff, who work closely with our supportive parents and village community. Our broad and exciting curriculum encourages every child to find and fulfil their potential, both academically and beyond the classroom.



This vision statement is underpinned by our seven core values:-

Respect

We treat each other with kindness and consideration, valuing and accepting our differences.

Honesty

We are truthful and trustworthy in our words and actions.

Positivity

We have a can-do attitude, believing that anything is possible.

Perseverance

We show resilience in all that we do and never give up.

Unity

We work together, learn from each other and celebrate our successes.

Creativity

We use our imagination to solve problems in new ways.

Empathy

We understand and share the feelings of others.

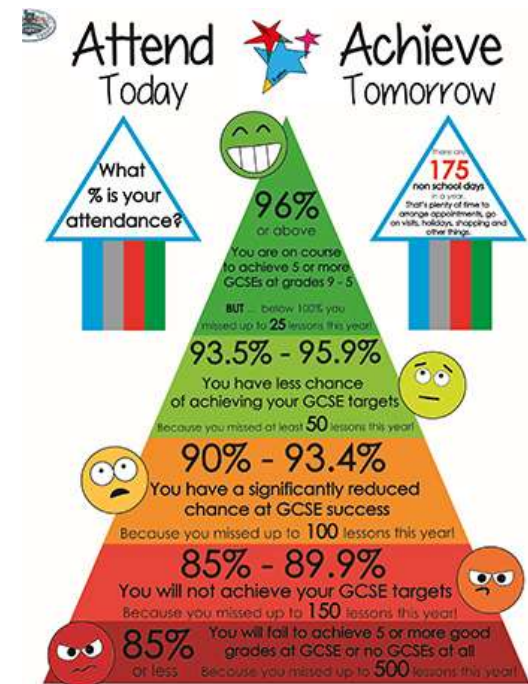


How do we ensure that children are ready and able to learn?

- **Encourage high attendance and punctuality**

Learning is a progressive activity; each day's lessons build upon those of the previous day(s). We may use discussions, demonstrations, experiments and participation as part of the daily learning activities. Those who are absent cannot make these up.

Arriving on time allows children to catch up with friends, have time to settle in, and enter the classroom relaxed and ready to learn. During the first 10-20 minutes each morning, children have an opportunity to work on individual targets. It is important that every child arrives on time in order to help their progress.



- **Encourage a Growth Mindset**

This is the belief that intelligence is not a fixed characteristic and can be increased through effort. Research (Good et al., 2003; Blackwell et al. 2007; Dweck C., 2012) suggests that holding this belief enables pupils to work harder and achieve better results.

We strongly encourage children to persevere (one of our core values) and to understand that mistakes are celebrated, as they help us to learn. We don't say 'We can't do it', we say, 'We can't do it YET'. The sense of achievement makes it all worthwhile!



- **Apply the Learning Zone Model**

Our children are introduced to the 'Learning Zone Model', which encourages children to persevere in the Learning Zone. On occasion, children may move into the Panic Zone during periods of learning. We help them to use a range of strategies in order to feel comfortable with challenge and move their learning on. The Comfort Zone gives children an opportunity to reflect or consolidate their learning. They are then ready for 'new' learning.



What will remain the same in Year 6?

- Assemblies
- PE with Albion in the Community on Thursdays
- Breaktime
- Snacks
- Water bottles
- PE Kit
- Use of the library

What will be different in Year 6?

- New classroom
- New staff
- Lunchtime is later!
- Timetable
- More roles and responsibilities
- Residential
- SATs



Year 6

Residential – Isle of Wight

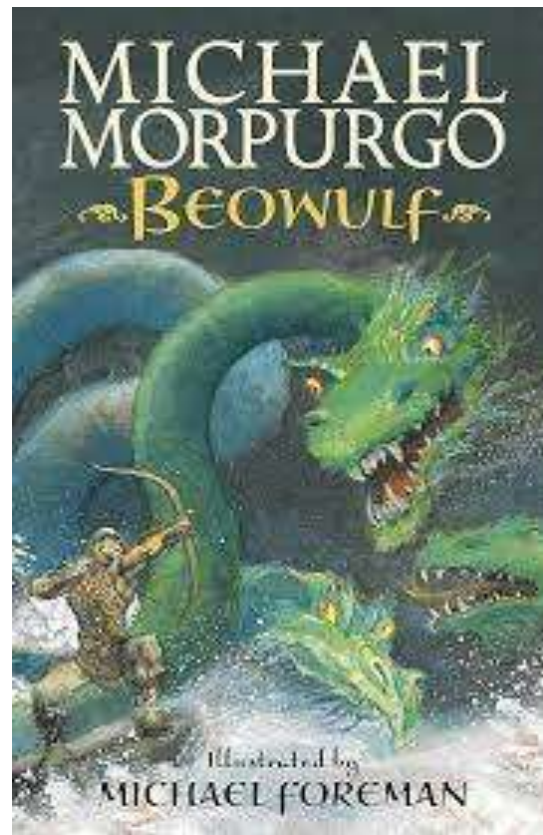
Forest School

- Tuesday afternoon
- Autumn 1 & 2

Music, Languages

- Spring and Summer

Time Riders: Anglo-Saxons and Vikings



PE

- Monday - Indoor
- Thursday – Outdoor/Swimming
- Daily Mile – every day

Please make sure that the children have their PE kit in school at all times



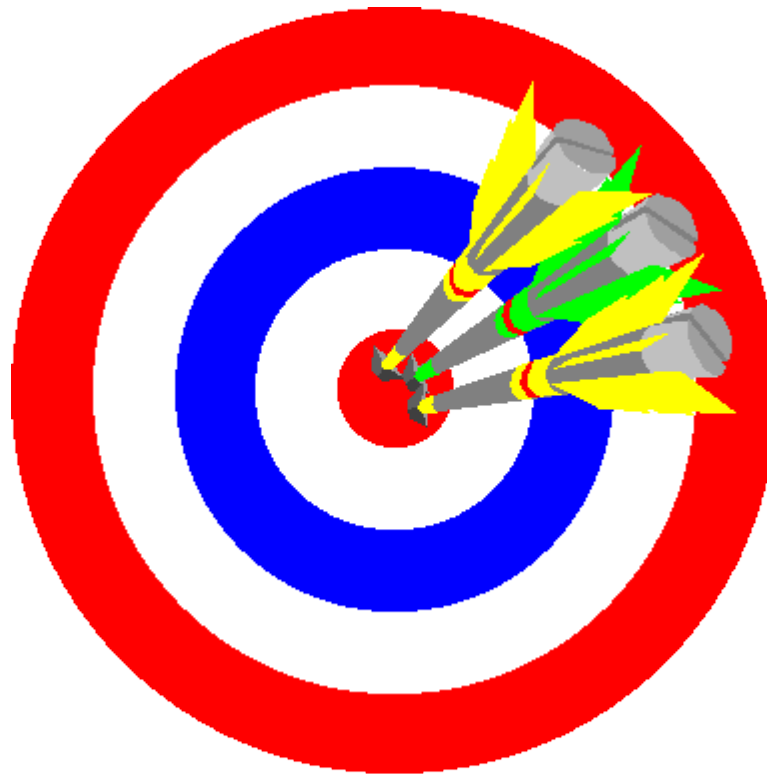
Homework

- Times Table Rockstars
- Daily Reading
- Spellings



Targets - WGPS

- Reading
- Writing
- Maths



Twitter

@WisGreenPrimary

Please follow us on Twitter
to keep up to date with
news and events.





Thank you for listening

Does anyone have any questions?

